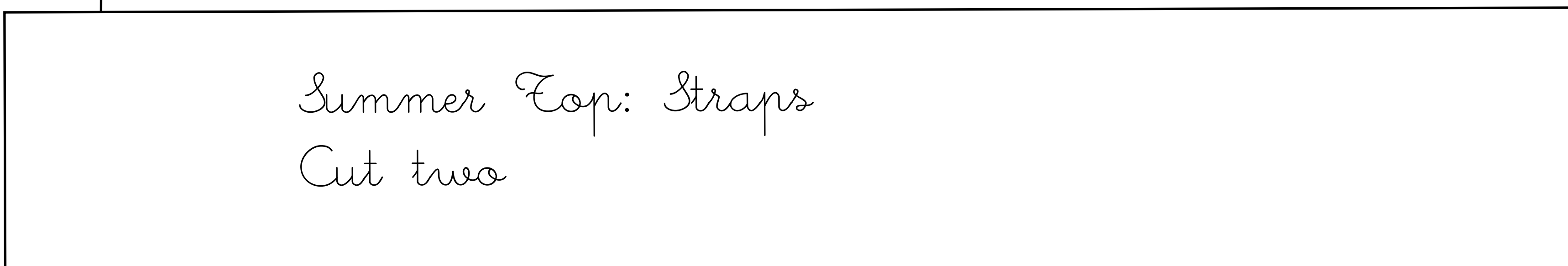
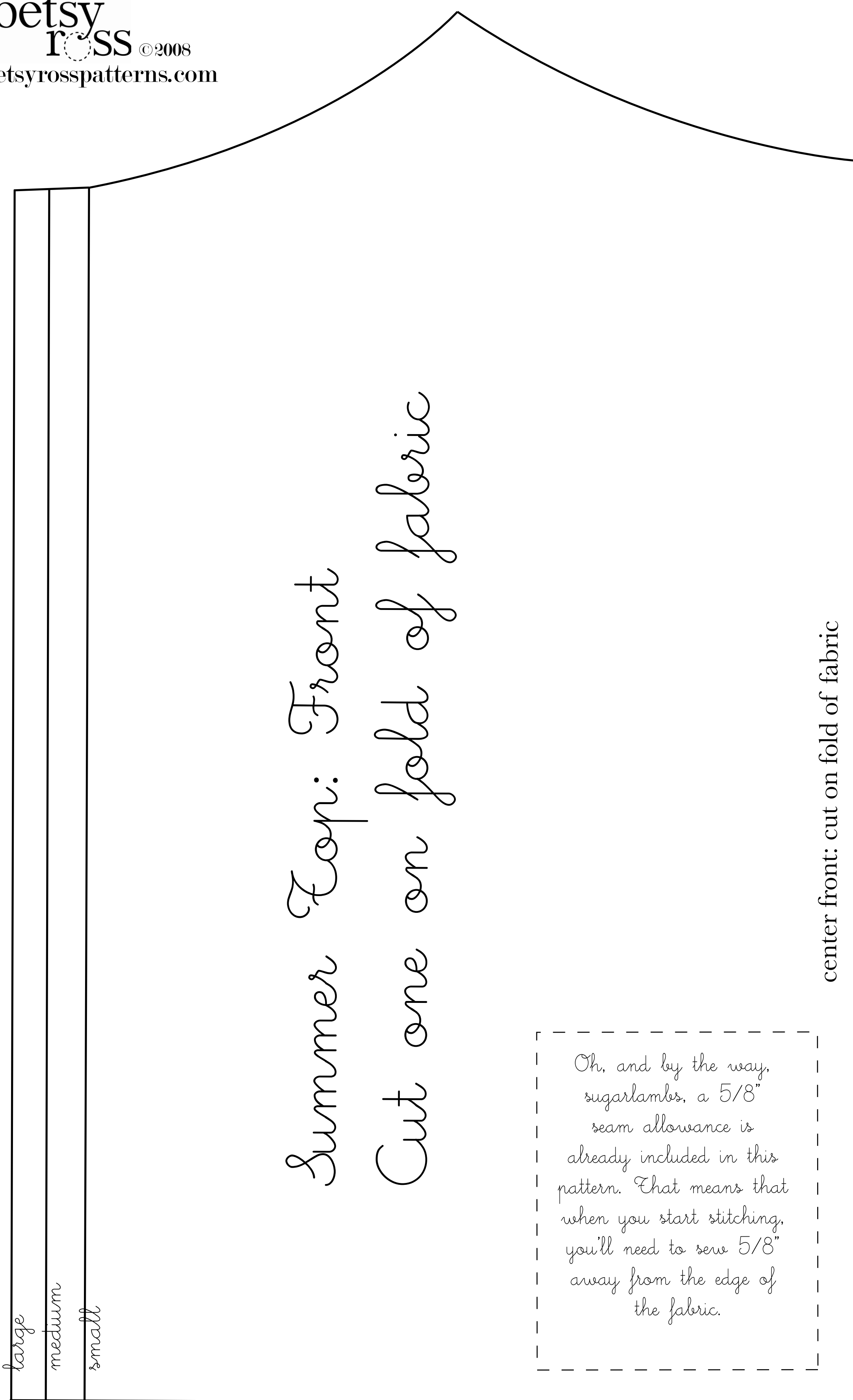


easy summer top



Sewing Instructions

Cut the pattern pieces in your size. Fold your fabric, selvages matching, with right sides touching. Lay the pattern pieces on the fabric and pin them down. Take care to place the pattern pieces on the fold of the fabric if instructed.

Sew the front piece to the back piece along the side seams, right sides touching.

Fold the top edges down 1/8" and then another 1/8" and topstitch in place to finish.

Fold the long sides of the strap pieces under (to the wrong side) one inch on both sides and press. Fold again and press to make a strap. Topstitch the open end shut, 1/4" from the folded edge. Pin in place on the top, approximately 3" from the side seams on the front and 5" from the side seams on the back. Adjust for personal preference (length as well as placement) and sew in place. Hem to desired length.