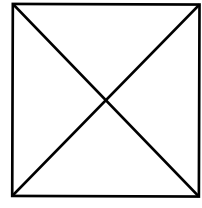


Betsy Ross Free Pattern:
Co-Market Purse

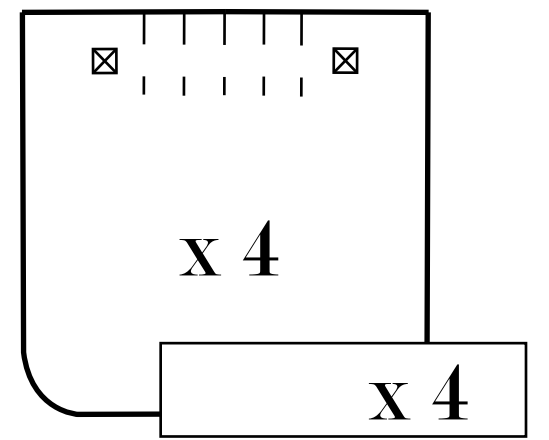
cut this side on fold of fabric

Co-Market Purse: Front & Back
Cut two on fold of exterior fabric
and two on fold of lining fabric.

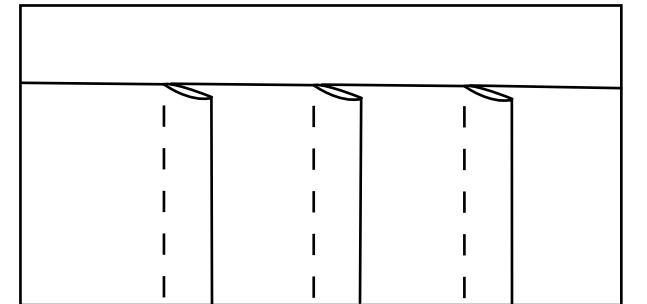


Sewing Instructions

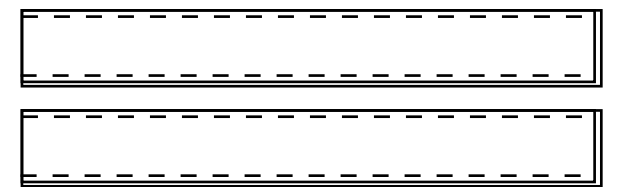
Cut the pattern pieces out, pin to fabric, cut fabric. A 1/2" seam allowance is included in the main purse piece. It is NOT included for the straps, as they are designed to be cut from leather (or pleather!), which means that the the edges will not need to be finished. If you want to use fabric for your straps, you will need to add a little extra on each side of the strap pattern so you can finish the edges neatly.



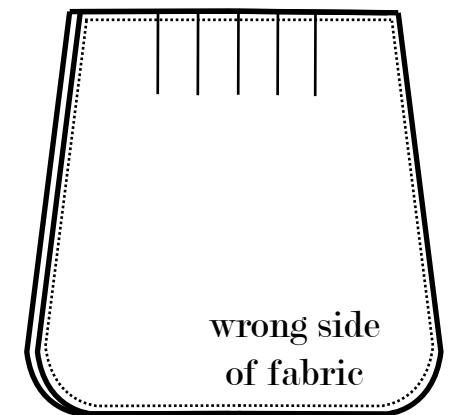
Make pintucks along each of the dotted lines on the four bag pieces by making small folds in the fabric and sewing the folds in place. These are made on the exterior of the fabric. Keep the resulting "flap" of the pintucks under 1/4" or else the opening of the purse will be too small. Note that there are 5 pintucks on each piece- one is located on the fabric fold.



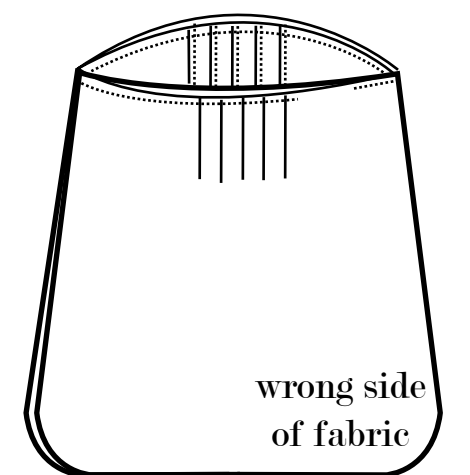
If you are using leather, glue two pieces together, wrong sides touching. We use "Shoe Goo," which is found at hardware stores. Let dry. Repeat for second set. If desired, stitch along long sides of the straps to secure in matching or contrasting thread.



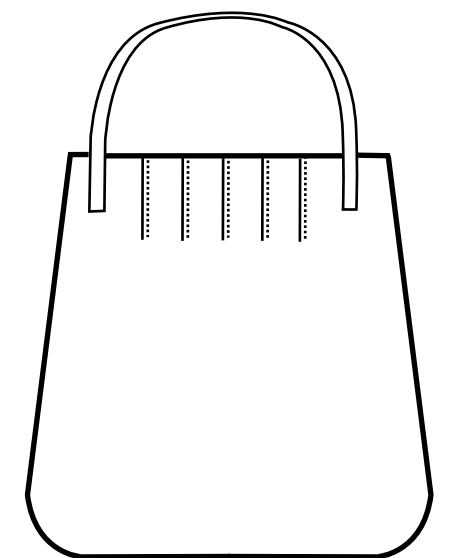
Sew the exterior pieces of the fabric together, right sides touching. Next, sew the lining fabric pieces together, right sides touching.



Sew the two sets of bags together, with right sides together. To do this, the exterior of the bag should be right side out, and placed inside the lining fabric, which is wrong side out. When you sew along the top edge (with a 1/2" seam allowance), make sure to leave a small hole so that you can turn the bag right side out.



Place the straps on each side of the bag on the square markings from the pattern. Sew in place securely. The length of the straps can be adjusted to personal preference.



Co-Market Purse: Straps: Cut four- make longer if desired.
(note: if you are using something other than leather, add 1/2" to each side for seam allowance)